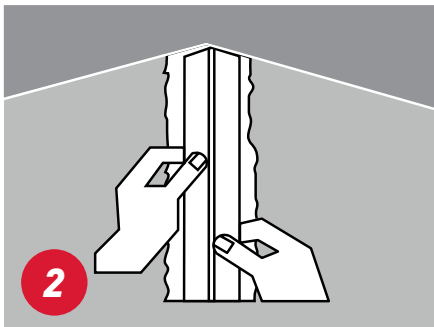
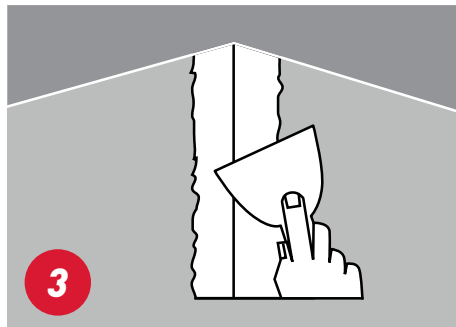


INSTALLATION INSTRUCTIONS

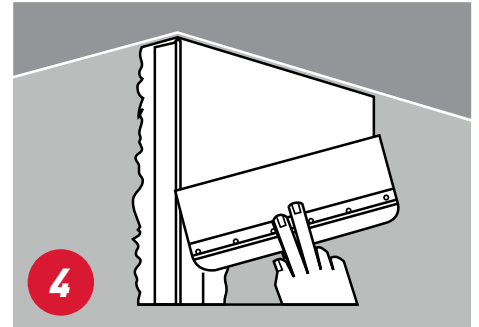
- 1 Apply a band of joint compound (Taping/All Purpose) 100mm (4") wide and 6mm (1/2") thick to each side of the corner.



2 Cut corner bead to length required and position over the joint compound allow 1/2" at bottom for expansion and contraction of framing members.



3 Embed the corner bead firmly into the compound using a small finishing knife. Wipe the excess compound off from under the paper to eliminate all the air bubbles (be careful not to remove all of the compound). Allow to dry minimum 24 hours.



4 Using a large finishing knife, apply all purpose compound in a band about 200mm (8") wide from the nose of the bead beyond the paper edge.

- 5 Level compound by drawing the knife along the bead with one edge of the blade riding on the nose of the bead and the other on the surface of the board. Repeat for the other side of corner bead. Allow to dry.
- 6 Apply second coat once previous coat is dry. Feather the edges of each coat about 50mm (2") beyond the preceding coat.
- 7 Repeat process for third coat.
Remember to sand between coats.